



ASIAN PLASTIC MACHINERY CO., LTD

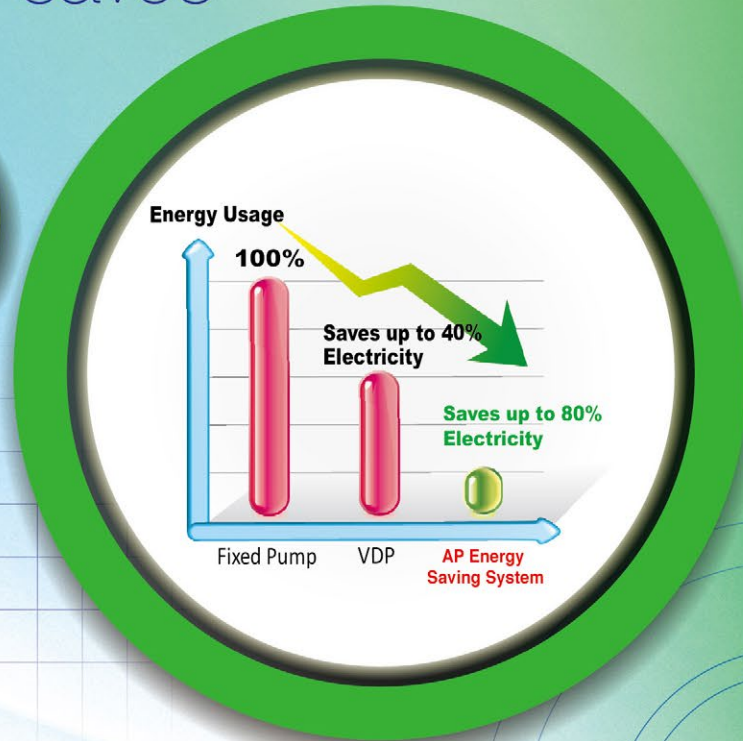


Super Master

Energy Saving Closed Loop Injection Molding Machine

Energy Saving Closed Loop

IMM series saves



upto **80%** Electricity!

Driven by a revolutionary intelligent servo system, Super Master Energy Saving Closed Loop IMM series combines a fast-response gear pump with a high-precision servomotor, integrated with a proprietary servo-drive into an affordable package that guarantees the highest response, highest precision and lowest power consumption at the same time.

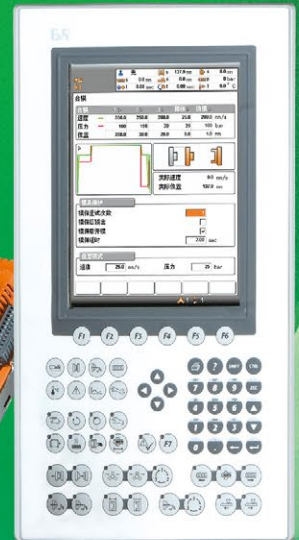
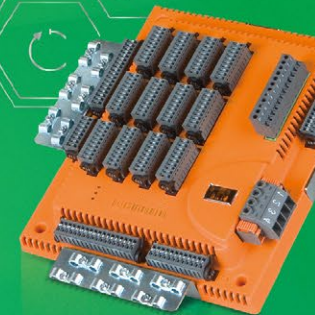
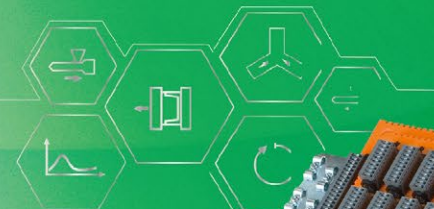
Super Master



SmartMold Controller

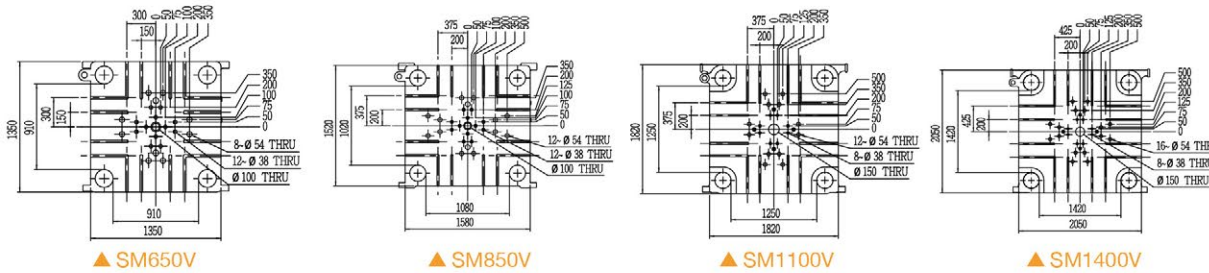
X86 based Smart mould controller with B&R 10.4" Colour TFT Monitor.

- Multilingual operation
- USER Programmable stages of injection speed, holding pressure, backpressure and screw RPM with close loop control.
- Full Function Monitoring
- Fully modular hardware design with option to add further future automation controls
- PID temperature control for high accuracy
- Store 1000 modification records like Motor ON/OFF, I/O replace, user LOG IN/OUT state etc.,
- User levels can be set as per log in passwords
- Option to set toggle order/crank position to increase the stability
- Generate Alarms, create logs of alarm history for easier troubleshooting



(Above 650 ton)Energy Saving (Closed Loop) Heavy Duty Double Toggle Machine

Mold Platen size



Specification

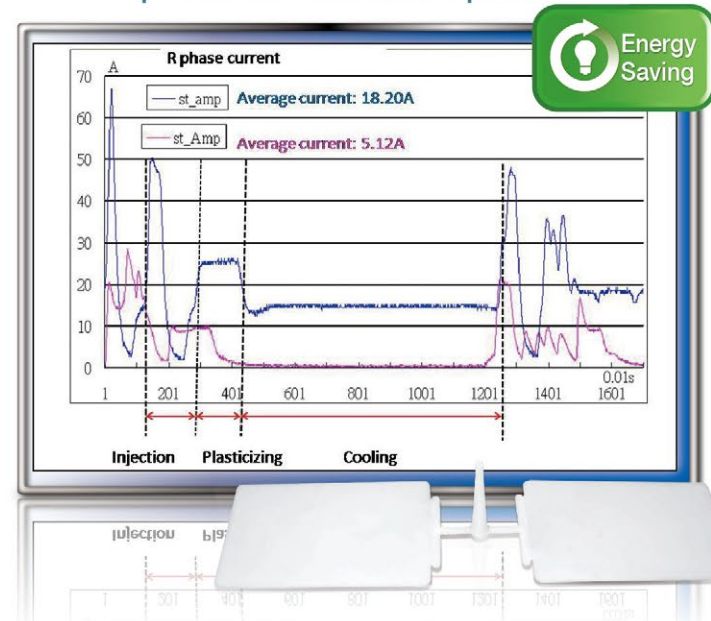
Machine Model	Unit	SM650V		SM850V		SM1100V		SM1400V	
Injection System									
Theoretical shot volume	cm ³	2327	2921	3396	3927	5322	6333	6333	7433
	oz	75.5	94.8	110.2	127.4	172.7	205.5	205.5	241.2
Shot Weight(PS)	g	2140	2687	3125	3613	4896	5827	5827	6838
Screw Diameter	mm	83	93	93	100	110	120	120	130
Injection Pressure	kg/cm ²	2175	1735	1925	1665	2095	1760	2185	1860
Injection Rate	cm ³ /sec	514	645	645	746	855	1018	905	1062
Injection Speed	mm/sec	95		95		90		80	
Screw Stroke	mm	430		500		560		560	
Screw Rotation	rpm	0~130		0~130		0~125		0~120	
Plasticizing Capacity(PS)	g/sec	63.5	79.7	79.7	92.2	120.6	143.5	137.8	161.7
Clamping System									
Clamping Force	ton	650		850		1200		1400	
Opening Stroke	mm	900		1000		1250		1350	
Max. Daylight	mm	2000		2200		2550		2750	
Mold Height(min-max)	mm	350-1100		400-1200		500-1300		700-1400	
Space Between Tie Bar	mm*mm	910*910		1080*1020		1250*1250		1400*1400	
Platen Dimension(HxV)	mm*mm	1350*1350		1580*1520		1820*1820		2050*2050	
Hydraulic Ejector	ton*mm	14*250		14*250		21.5*400		21.5*400	
Power System									
Pump Motor	kw	15*3+11*1		15*4+11*1		15*6		15*6+11*1	
Heating Capacity	kw	35		35		48.1		64.1	
Max. System Pressure	kg/cm ²	175		175		175		175	
Oil Tank Capacity	Liter	1000		1200		1800		2200	
Other									
Machine Dimension	L*W*H(m)	10.4*2.1*2.2		11*2.4*2.3		13.2*2.6*2.7		14.5*2.9*2.8	
Machine Weight	ton	35		45		55		78.5	

NOTE: The above figures are applicable for the voltage/frequency of 220V/60Hz (Specifications may be changed without prior notice.)

Reality Testing

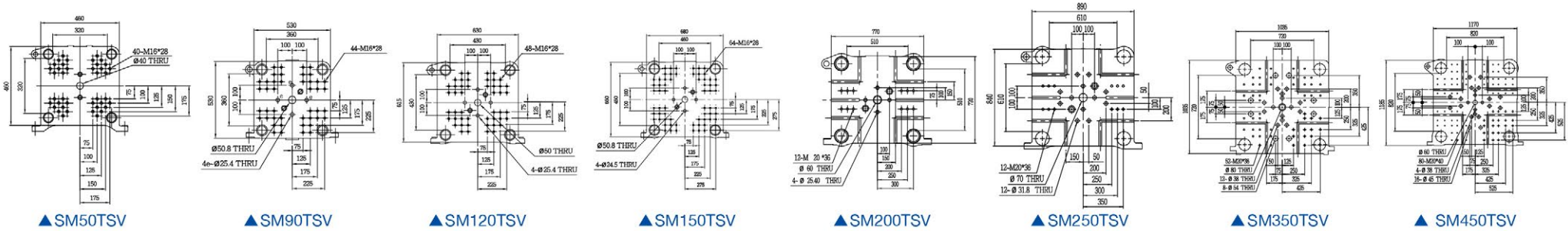
Smart Card	
Plastic Resin	PP
Cycle	17secs
Cavity	2-cavity per mold (weight:9.2gram)
Power consumption (Standard)	4 degrees in per hour
Power consumption (SUT series)	1.13 degree in per hour

The comparison of the power consumption



Energy Saving (Closed Loop) High Speed Double Toggle Machine

Mold Platen size



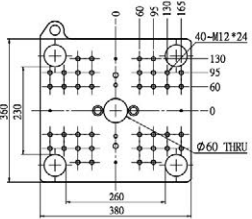
Specification

Machine Model	Unit	SM50TSV		SM90TSV		SM120TSV		SM150TSV		SM200TSV		SM250TSV		SM350TSV		SM450TSV	
Injection System																	
Theoretical shot volume	cm ³	64	80	92	113	128	173	193	251	277	349	382	488	552	735	820	1022
Shot Weight(PS)	oz	2.1	2.6	3.0	3.7	4.2	5.6	6.3	8.1	9.0	11.3	12.4	15.9	17.9	23.9	26.6	33.2
	g	59	74	85	104	118	159	178	231	255	321	352	449	508	676	754	941
Screw Diameter	mm	25	28	28	31	31	36	36	41	41	46	46	52	52	60	60	67
Injection Pressure	kg/cm ²	2645	2105	2675	2180	2865	2125	2745	2115	2745	2180	2660	2080	2805	2105	2625	2105
Injection Rate	cm ³ /sec	83	104	86	105	117	157	132	171	165	207	224	285	265	353	282	352
Injection Speed	mm/sec	170		140		155		130		125		135		125		100	
Screw Stroke	mm	130		150		170		190		210		230		260		290	
Screw Rotation	rpm	0~300		0~300		0~300		0~300		0~250		0~250		0~250		0~180	
Plasticizing Capacity(PS)	g/sec	6.6	8.3	8.3	11.8	10.2	16.5	16.5	25	20.8	28.2	28.1	34.7	40.7	63.8	49.8	62.1
Clamping System																	
Clamping Force	ton	50		90		120		150		200		250		350		450	
Opening Stroke	mm	250		270		350		400		470		550		650		740	
Max. Daylight	mm	570		620		750		850		1020		1200		1370		1590	
Mold Height(min-max)	mm	100-320		125-350		150-400		150-450		200-550		200-650		300-720		300-850	
Space Between Tie Bar	mm*mm	320*320		360*360		430*430		460*460		510*510		610*610		720*720		820*820	
Platen Dimension(HxV)	mm*mm	460*460		530*530		630*615		680*660		770*720		890*840		1035*1035		1170*1170	
Hydraulic Ejector	ton*mm	2.2*80		3.4*90		3.4*125		3.4*125		4.9*150		7.7*150		8.7*200		8.7*200	
Power System																	
Pump Motor	kw	11		11		15		15		11+11		11+15		15+15		15+15	
Heating Capacity	kw	6.1	6.9	6.9	7.9	8.5	10.3	10.3	11.8	15.3	17.7	17.7	20.4	22.2	24.8	24.8	24.8
Max. System Pressure	kg/cm ²	175		175		175		175		175		175		175		175	
Oil Tank Capacity	Liter	185		195		265		290		430		500		535		615	
Other																	
Machine Dimension	L*W*H(m)	4*1.2*1.5		4.1*1.3*1.6		4.7*1.4*1.7		4.9*1.4*1.75		6.1*1.65*1.8		6.6*1.7*1.95		6.9*1.9*1.95		8*1.9*2.05	
Machine Weight	ton	3.2		3.6		4.6		5.2		8.9		10.8		14		18.8	

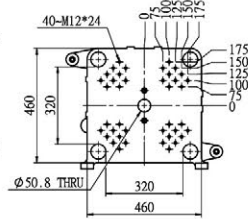
NOTE: The above figures are applicable for the voltage/frequency of 220V/60Hz (Specifications may be changed without prior notice.)

Energy Saving (Closed Loop) Hydraulic Clamping Machine

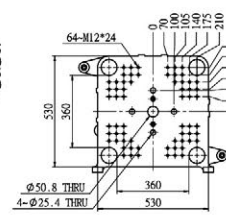
Mold Platen size



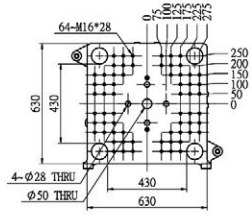
▲ SM30HCV



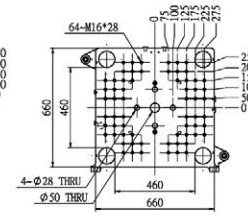
▲ SM60HCV



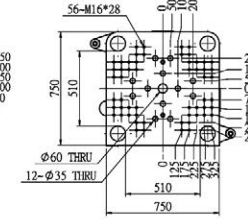
▲ SM90HCV



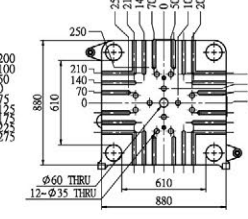
▲ SM120HCV



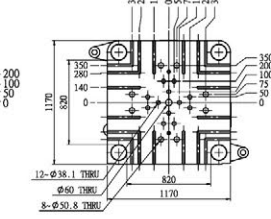
▲ SM150HCV



▲ SM180HCV



▲ SM260HCV



▲ SM360HCV

▲ SM460HCV

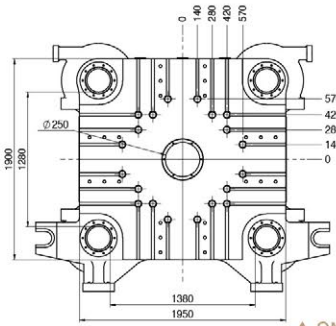
Specification

Machine Model	Unit	SM30HCV	SM60HCV	SM90HCV	SM120HCV	SM150HCV	SM180HCV	SM260HCV	SM360HCV	SM460HCV
Injection System										
Theoretical shot volume	cm ³	18 22 27	95 117	136 183	209 271	304 382	432 552	637 848	947 1181	1322 1657
Shot Weight(PS)	oz	0.6 0.7 0.9	3.1 3.8	4.4 5.9	6.8 8.8	9.9 12.4	14.0 17.9	20.7 27.5	30.7 38.3	42.9 53.8
	g	16 20 24	88 108	125 169	192 249	297 352	398 507	585 780	870 1085	1216 1524
Screw Diameter	mm	18 20 22	28 31	31 36	36 41	41 46	46 52	52 60	60 67	67 75
Injection Pressure	kg/cm ²	2280 1845 1525	2710 2210	2900 2150	2750 2120	2620 2080	2645 2070	2445 1835	2330 1870	2285 1820
Injection Rate	cm ³ /sec	70 86 105	86 106	106 143	132 172	172 216	216 276	255 339	311 388	388 486
Injection Speed	mm/sec	275	140	140	130	130	130	120	110	110
Screw Stroke	mm	70	155	180	205	230	260	300	335	375
Screw Rotation	rpm	0~300	0~300	0~300	0~300	0~300	0~250	0~200	0~175	0~175
Plasticizing Capacity(PS)	g/sec	2.6 3.7 5.1	8.3 10.2	10.2 16.5	16.5 22.3	22.3 33.7	28.1 34.7	27.8 44.6	44.6 48.7	48.7 67.9
Clamping System										
Clamping Force	ton	27	60	90	120	150	180	260	360	460
Opening Stroke	mm	280	430	500	550	600	700	850	1000	1150
Max. Daylight	mm	430	580	670	730	790	920	1090	1300	1470
Mold Height(min-max)	mm	150	150	170	180	190	220	240	300	320
Space Between Tie Bar	mm*mm	260*230	320*320	360*360	430*430	460*460	510*510	610*610	720*720	820*820
Platen Dimension(HxV)	mm*mm	380*360	460*460	530*530	630*630	660*660	750*750	880*880	1035*1035	1170*1170
Hydraulic Ejector	ton*mm	1.68*60	2.7*80	4*90	4.9*125	4.9*125	5.8*150	7.7*180	10*200	10*200
Power System										
Pump Motor	kw	11*1	11*1	15*1	15*1	11*2	15*1+11*1	15*2	15*2	15*2+11*1
Heating Capacity	kw	2.5 2.8	7.3	8.7	11.4	13.3	18.8	21.2	28.9	32.7
Max. System Pressure	kg/cm ²	175	175	175	175	175	175	175	175	175
Oil Tank Capacity	Liter	190	260	360	500	500	600	880	920	1020
Other										
Machine Dimension	L*W*H(m)	2.7*0.9*1.3	3.9*1.3*1.5	4.2*1.4*1.6	4.7*1.5*1.7	4.9*1.5*1.7	5.8*1.6*1.9	6.4*1.7*2	7.6*1.8*2.1	8.1*1.8*2.1
Machine Weight	ton	1.2	3.5	4	4.9	5.8	7.1	10	14.4	16.8

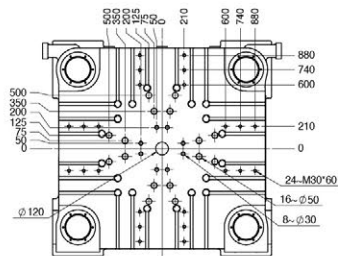
NOTE: The above figures are applicable for the voltage/frequency of 220V/60Hz (Specifications may be changed without prior notice.)

Energy Saving (Closed Loop) Dual-Platen Machine

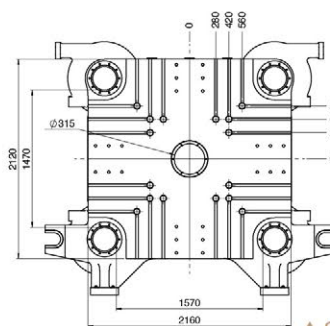
Mold Platen size



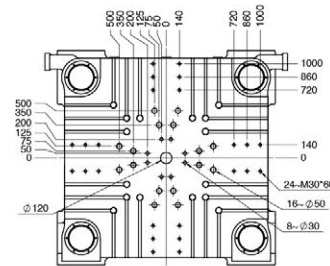
▲ SM1250DPV



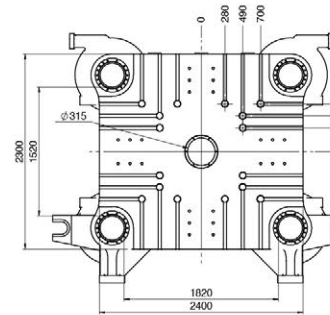
▲ SM1650DPV



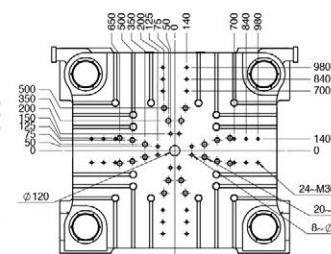
▲ SM2200DPV



▲ SM3000DPV



▲ SM3600DPV



Specification

Machine Model	Unit	SM1250DPV	SM1650DPV	SM2200DPV	SM3000DPV	SM3600DPV							
Injection System													
Theoretical shot volume	cm ³	5224	6217	8623	10001	10770	12364	23079	30144	23079	30144	34540	43715
Shot Weight(PV)	g	4754	5658	7847	9101	9801	11251	21002	27431	21002	27431	31431	39780
Screw Diameter	mm	110	120	130	140	140	150	175	200	175	200	200	225
Injection Pressure	kg/cm ²	1840	1550	1800	1550	1800	1570	1600	1230	1600	1230	1600	1260
Injection Rate	cm ³ /sec	825	982	1136	1317	1296	1488	1970	2339	1970	2339	2122	2686
Injection Speed	mm/sec	87	87	86	86	84	84	82	74	82	74	68	68
Screw Stroke	mm	550	650	700	700	960	960	960	1100	960	1100	1100	1100
Screw Rotation	rpm	115	100	95	85	85	65	85	65	85	65	65	65
Clamping System													
Clamping Force	ton	1250	1650	2200	3000	3600							
Opening Stroke	mm	1500~2300	1700~2500	1600~2500	2100~3000	2200~3200							
Max. Daylight	mm	2800	3100	3200	3900	4200							
Mold Height(min-max)	mm	500~1300	600~1400	700~1600	900~1800	1000~2000							
Space Between Tie Bar	mm*mm	1380*1280	1570*1470	1820*1520	2020*1820	2170*1920							
Platen Dimension(HxV)	mm*mm	1950*1900	2160*2120	2400*2300	2800*2760	3000*2900							
Hydraulic Ejector	ton*mm	22*400	35*400	45*450	45*500	55*550							
Power System													
Pump Motor	kw	90	105	120	165	165		165		180			
Heating Capacity	kw	50	65	80	130	130		130		165			
Max. System Pressure	kg/cm ²	175	175	175	175	175		175		175			
Oil Tank Capacity	Liter	2000	2800	3100	4000	4000		4000		4800			

NOTE: The above figures are applicable for the voltage/frequency of 220V/60Hz (Specifications may be changed without prior notice.)



ISO 9001/14001

NO. 1, Sung Chiang North Road, Chung Li Industrial District,
Chung Li, Taoyuan, Taiwan, R.O.C
TEL : 886-3-452-2288 FAX : 886-3-452-0261
E-mail : asian@asianplastic.com.tw
[http : //www.asianplastic.com.tw](http://www.asianplastic.com.tw)